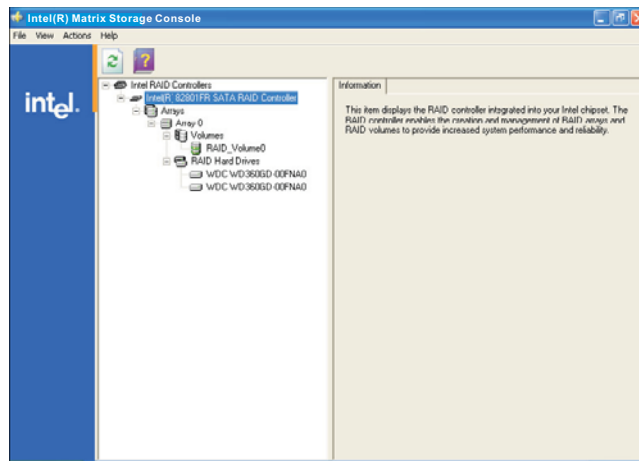

Guide to Intel Matrix Storage Manager

1. Enter Intel Matrix Storage Manager

RAID driver is built in Intel ALL in one driver provided in our support CD. After you finish the driver installation, you can create, delete, or rebuild any RAID array. Please enter Intel Matrix Storage Manager by clicking on **Start** → **All Programs** → **Intel(R) Matrix Storage Manager** → **Intel Matrix Storage Console**.

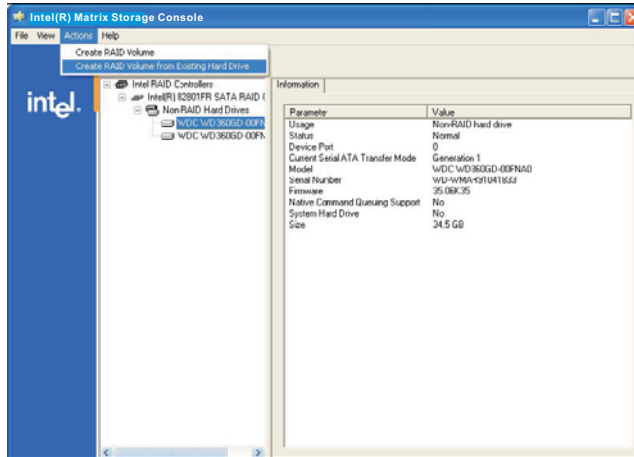


Then, the below screen appears.

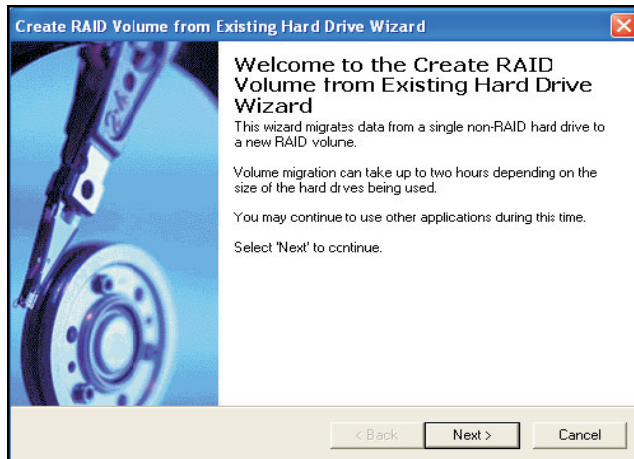


2. Create RAID Volume

Select **Action** → **Create RAID Volume from Existing Hard Drive** to create a RAID volume.

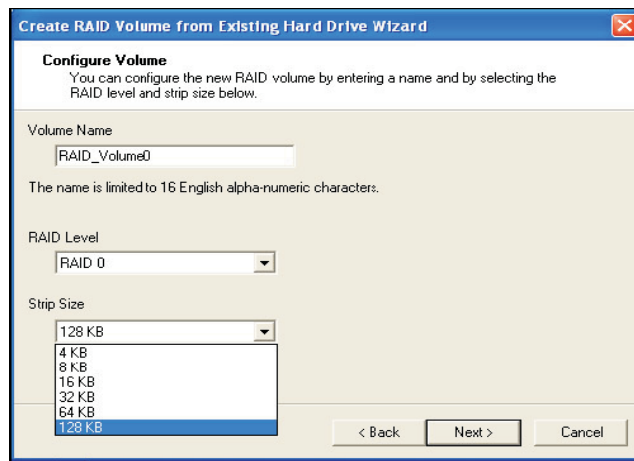


Then, **Create RAID Volume from Existing Hard Drive Wizard** pops up. Please click **Next** to continue.

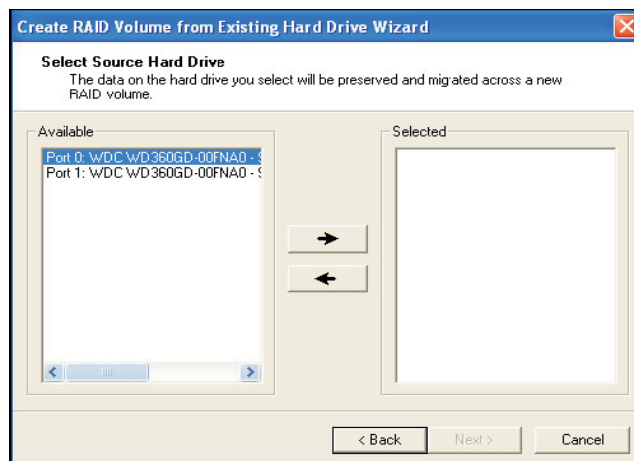


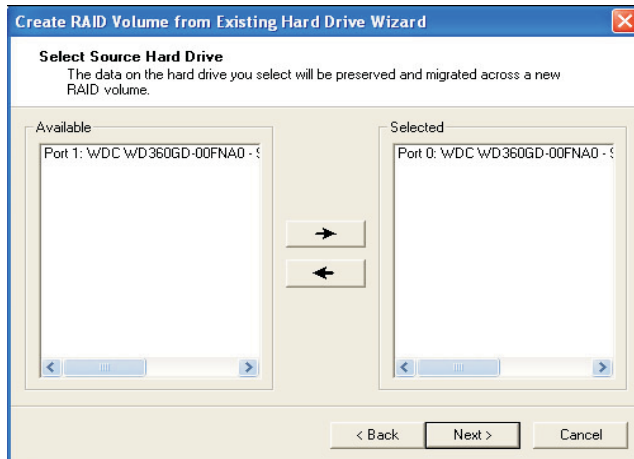
To configure a new RAID volume, you need to key-in the **Volume Name** with 1-16 letters, select the **RAID Level**, and then set the **Strip Size** between 4KB and 128KB. The most typical strip size settings are:

- 4KB: For specialized usage models requiring 4KB strips
- 8KB: For specialized usage models requiring 8KB strips
- 16KB: Best for sequential transfers
- 32KB: Good for sequential transfers
- 64KB: Good general purpose strip size
- 128KB: Best performance for most desktops and workstations

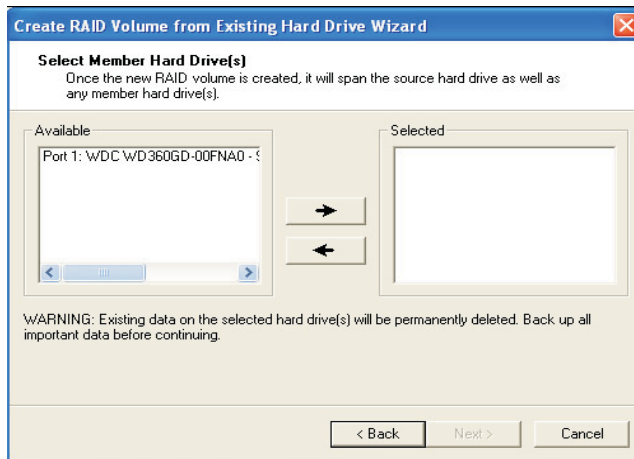


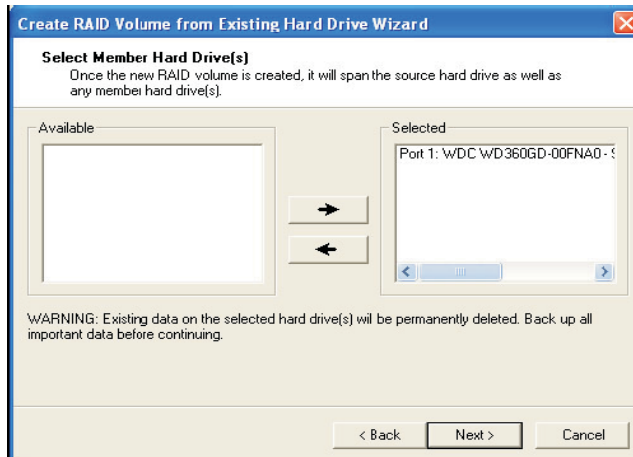
Then you have to select the source disk. Please click the "→" arrow to move the source disk that you plan to use to the **Selected** field, and then click **Next** to continue.



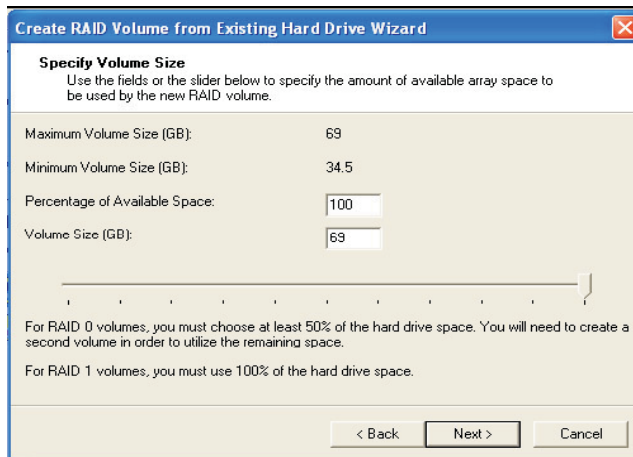


Then you have to select the member disk. Please click the "→" arrow to move the member disk that you plan to use to the **Selected** field, and then click **Next** to continue. Since the existing data on the selected hard disk drive will be deleted, do not forget to back up your data before continuing.

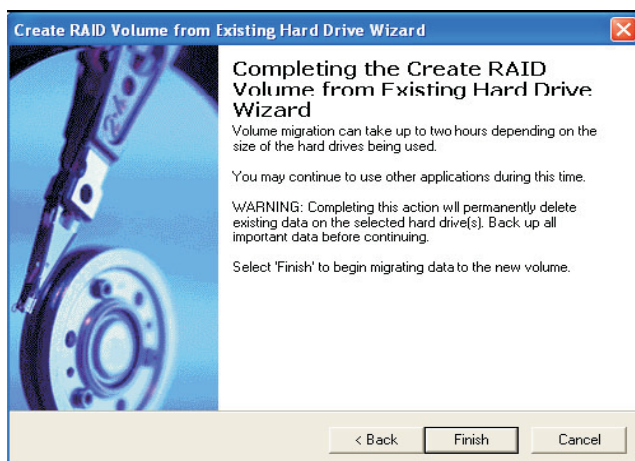




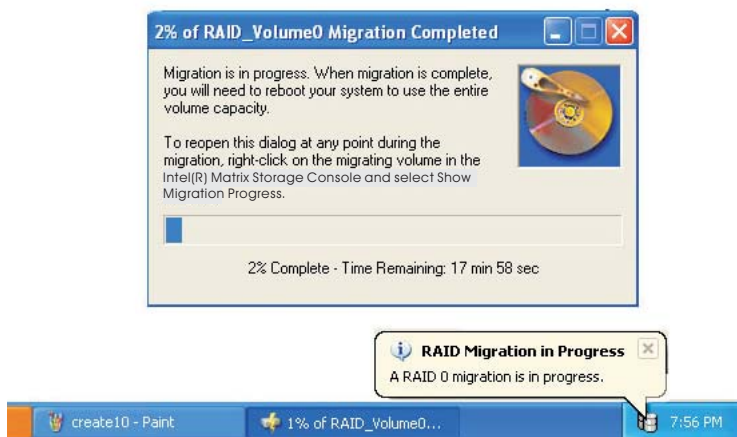
Specify the **Volume Size**. Specify the amount of available array space to be used by the new RAID volume. You may enter the amount in the space or use the slider to specify. It is recommended you use 100% of the available space for the optimized usage. Then click **Next** to continue.



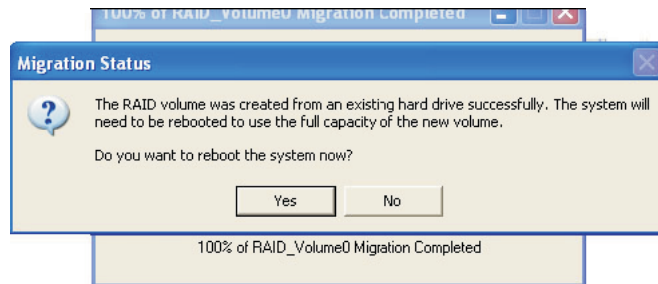
Start Creating RAID Volume from Existing Hard Drive Wizard. Please note that as long as you click **Finish**, the existing data on the selected hard drive will be deleted and this operation cannot be undone. It is critical that you backup all important data before this step.



Then, the migration process starts, which may take up to two hours to complete depending on the size of the disks being used and the strip size selected.



After the migration process is completed, the below screen appears. Then you have to reboot your system to use the full capacity of the new volume.



IRRT (Intel Rapid Recover Technology)

Intel Rapid Recover Technology is a feature of Intel Matrix Storage Manager. It uses RAID 1 (mirroring) functionality to copy data from a designated master drive to a designated recovery drive. The master drive data can be copied to the recovery drive either continuously or on request.

When using the continuous update policy, changes made to the data on the master drive while the system is not docked are automatically copied to the recovery drive when the system is re-docked. When using the on request update policy, the master drive data can be restored to a previous state by copying the data on the recovery drive back to the master drive.

Note:

The recovery volume can be the only volume on a system. Recovery volume capacity will equal the size of the smaller of the two hard drives.